

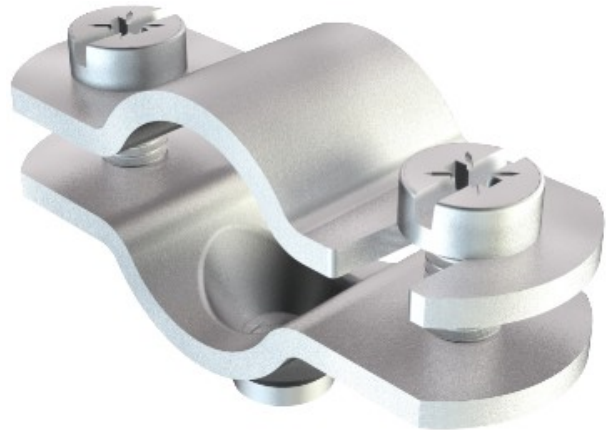


Electric Automation
Automation specialists

Reference: 731 W 16 G
Code: 1366165

Distance saddle with threaded connection M6, 12-16mm, Electrogalvanised, DIN 50961, Steel, St

[Buy it at Electric Automation Network](#)



Mounting with screw-in spacer clips. Spacer clips and screw-in spacer clips are available in various materials: in V2A stainless steel, in electrogalvanised, hot-dip galvanised steel or in aluminium. Fastening can be take place with bolt ties or Angler anchors and Sprint screws.

Depending on the design, the clips can be "shot" using a bolt-firing tool or nail device.