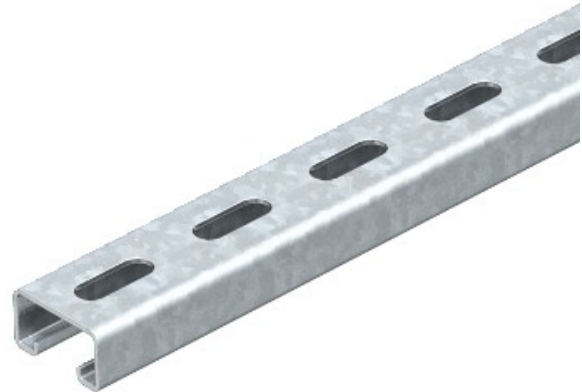




Reference: MS 21 L 2M FT
Code: 1122923

Profile rails perforated, slot width 22 mm, 2000x41x21, Hot-dip galvanised, DIN EN ISO 1461, Steel, St

[Buy it at Electric Automation Network](#)



Static values:

$A = 1,64837 \text{ cm}^2$

$I_y = 0,952339 \text{ cm}^4$

$I_z = 4,5113 \text{ cm}^4$

$W_y = 0,888299 \text{ cm}^3$

$W_z = 2,20087 \text{ cm}^3$