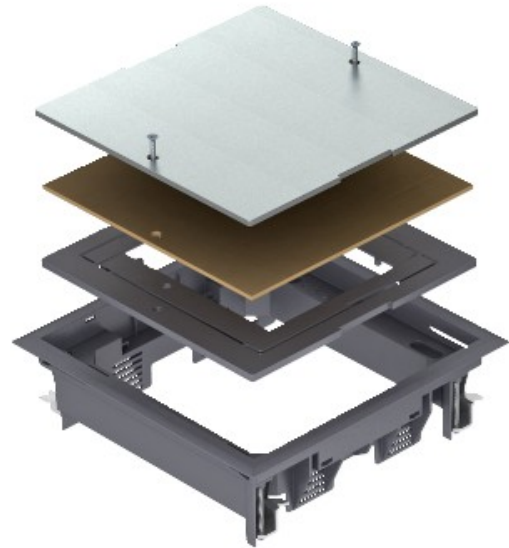




Reference: ZES4-2 U10T 7011  
Code: 7406701

Junction box insert for universal mounting, Iron grey, 7011, Polyamide, PA

Buy it at [Electric Automation Network](#)



Draw box insert for blanking locking of a square mounting opening of nominal size 4 in trunking systems and system floors.  
Floor covering recess is set to 5 mm on delivery, if necessary adjustable to 3, 8 or 10 mm