

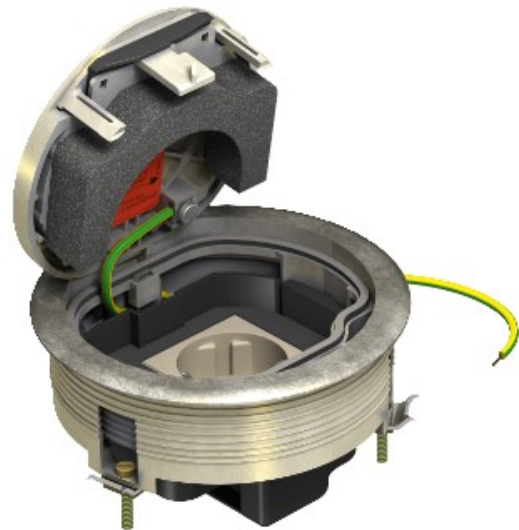


**Electric Automation**  
Automation specialists

Reference: GESRMS2 HS  
Code: 7405644

Service outlet for RF/CF, old brass,  
Brass-coated, Die-cast zinc, Zn

Buy it at [Electric Automation Network](#)



Round flush-mount unit with floor covering protection frame for direct installation in a cavity or raised floor. The scope of delivery contains a white single socket 16A, switched.

When closed, the flush-mount unit can be wet-cleaned. The minimum installation depth is 70 mm and The floor installation opening must be 120 mm  
Surface: Old brass.