

LINEAR MEASUREMENT ACCESSORIES

DW™

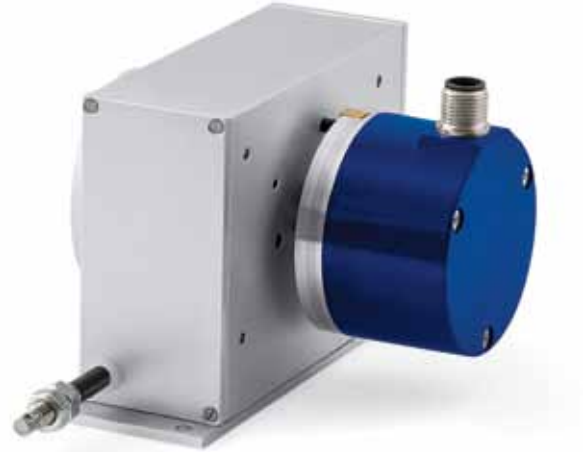
Draw Wire

The draw wire accessory is used with the encoder for length measurement and position control applications.

The accuracy is given by the ratio between the draw wire drum circumference and the encoder resolution, e.g.:

204.8 mm / 8192 CPR = 0.025 mm per code

200 mm / 10000 PPR = 0.02 mm per pulse



APPLICATION

-Length measurement and positioning

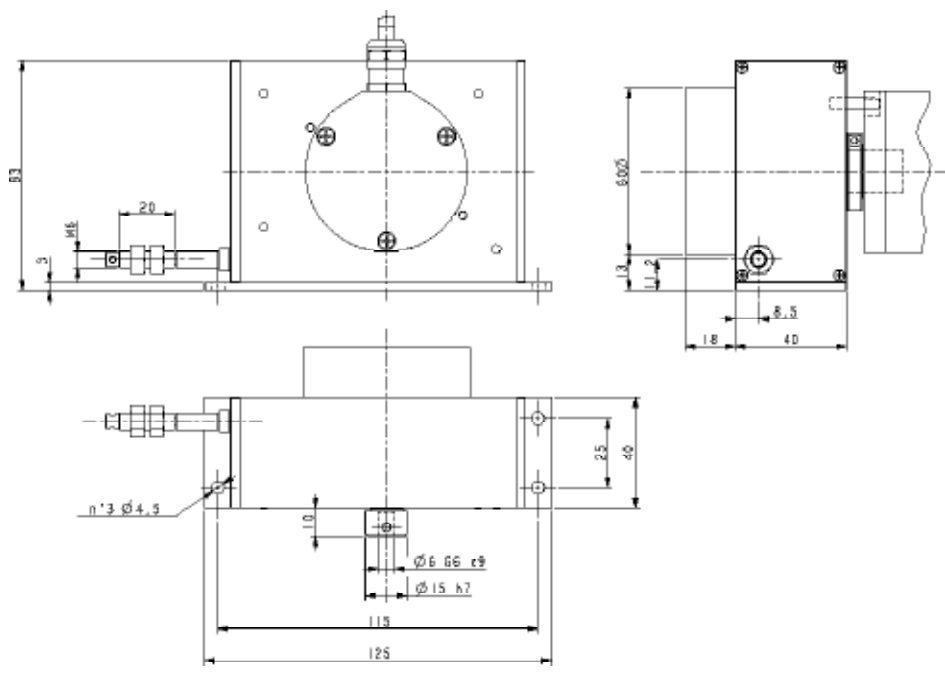


MECHANICAL AND ENVIRONMENTAL SPECIFICATIONS

Stroke per turn (absolute encoder)	204.8 mm
Stroke per turn (integral encoder)	200 mm
Wire retraction force	5 ± 15 N
Measuring wire length	5000 mm
Measuring speed	3 m/sec max.
Repeat accuracy	± 0.15 mm
Wire material	Stainless steel non-magnetic UNI EN 4305
Housing material	Aluminium anticorodal UNI EN AW-6082
Mechanical protection	IP64
Weight	600 gr. (without encoder)
Operating temperature	-25 to +85°C (-13 to 185°F)
Storage temperature	-25 to +85°C (-13 to 185°F), 98% R.H. non condensing
Shock resistance	100g, 6 ms (MIL STD 202F)
Vibration resistance	10 g, 5-2000 Hz (MIL STD 202F)
Operating temperature	-25 to +85°C (-13 to 185°F)
Storage temperature	-40 to +100°C (-40 to 212°F), 98% R.H. non condensing

MODEL SELECTION		
DESCRIPTION	MODEL	ORDER NO.
Draw wire for absolute encoder wire length 5000 mm, drum circumference 204.8 mm	DWA-5000	95B081440
Draw wire for integral encoder wire length 5000 mm, drum circumference 200 mm	DWI-5000	95B081460

DIMENSIONS



DW

