

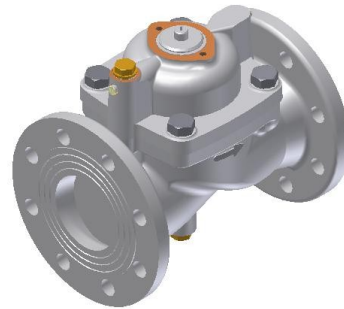


**Electric Automation**  
Automation specialists

Reference: 016D5080

Type Code WVS/WVTS 80 , Weight 26.38 Kg , Approval EAC , Body mat. Cast iron , Charge type Universal

Buy it at Electric Automation Network



Cooling water regulating valves of type WVTS are suitable for controlling the temperature of a flow of water or neutral brine. WVTS water reg. valve opens on rising sensor temperature. Large self-acting cooling water regulating valves for accurate flow control based on sensor temperature Open on rising temperature Cast iron valve body Thermostatic pilot elements (2 or 5 m capillary tube) ordered separately

Type Code	WVS/WVTS 80
Weight	26.38 Kg
Approval	EAC
Body mat.	Cast iron
Charge type	Universal
Connection	Weld flange 3 in
Cv value	92,630 gpm US
EAN no.	5702422002710
More info.	WITHOUT PILOT ELEMENT
Kv value	80,000 m3/h
Max. Working Pressure	10,0 bar

Max. Working Pressure	145 psig
Medium	Neutral media
Medium temp. range	-25 - 90 °C
Medium temp. range	-13 - 194 °F
Orifice size	80,00 mm

Prod. group	Water regulating valves
Prod. name	Pressure operated water valve
Temp. range	-25 - 90 °C
Temp. range	-13 - 194 °F