

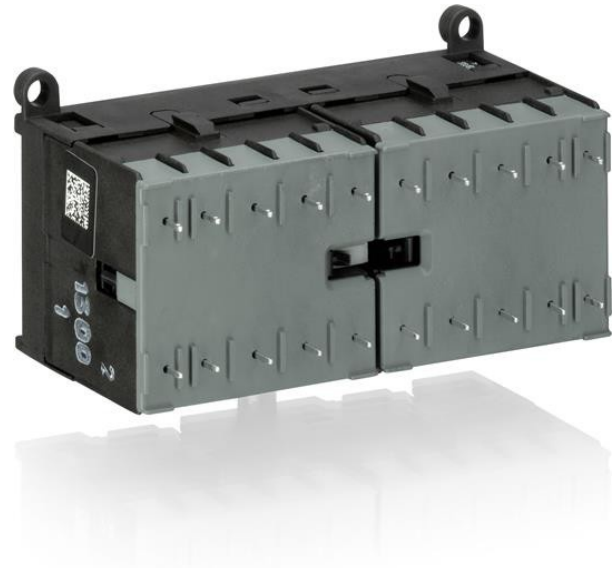


Electric Automation
Automation specialists

Reference: VB6A-30-10-P
Code: GJL1211919R8105

VB6A-30-10-P-85 Mini Reversing
Contactor

Buy it at Electric Automation Network



The VB6A-30-10-P mini reversing contactor is a compact 3 pole contactor with 1 auxiliary contact, soldering pins and mechanical interlock and safety blocking. They are ideally suited for applications where reliability is a must and space is at a premium. Mini reversing contactors are used in residential buildings, commercial buildings and industrial applications for the control of three-phase motor loads up to 4 kW (AC-3). Further features are the silent coil, a switch position indication and the integrated possibility for rail mounting.

Ordering

EAN:	4013614189562
Minimum Order Quantity:	1 piece
Customs Tariff Number:	85365080

Dimensions

Product Net Width:	96.5 mm
Product Net Height:	57.5 mm
Product Net Depth:	51.5 mm
Product Net Weight:	0.345 kg

Container Information

Package Level 1 Units:	5 piece
------------------------	---------

Package Level 1 Width:	115 mm
Package Level 1 Height:	64 mm
Package Level 1 Length:	280 mm
Package Level 1 Gross Weight:	1.795 kg
Package Level 1 EAN:	4013614414466

Environmental

Ambient Air Temperature:	Operation -20 ... +55 °C Storage -40 ... +80 °C
Maximum Operating Altitude Permissible:	2000 m
Resistance to Shock acc. to IEC 60068-2-27:	11 ms Pulse 15g
Resistance to Vibrations acc. to IEC 60068-2-6:	5g / 5 ... 150 Hz
RoHS Status:	Following EU Directive 2002/95/EC August 18, 2005 and amendment

Technical

Contacto Starter Type:	Compact Reversing Contactor with Mechanical Interlock and Safety Blocking
Number of Auxiliary Contacts NC:	0
Number of Auxiliary Contacts NO:	1
Number of Main Contacts NC:	0
Number of Main Contacts NO:	3
Number of Poles:	3
Pollution Degree:	3
Rated Frequency (f):	Control Circuit 400 Hz Control Circuit 50 Hz Control Circuit 60 Hz Main Circuit 60 Hz Main Circuit 50 Hz Main Circuit DC
Rated Impulse Withstand Voltage (U _{imp}):	Main Circuit 6 kV
Rated Insulation Voltage (U _i):	690 V acc. to UL/CSA 600 V
Rated Operational Current AC-1 (I _e):	(220 / 240 V) 40 °C 12 A (220 / 240 V) 55 °C 12 A (380 / 440 V) 40 °C 12 A (380 / 440 V) 55 °C 12 A (690 V) 40 °C 6 A (690 V) 55 °C 6 A
Rated Operational Current AC-3 (I _e):	(220 / 230 / 240 V) 55 °C 8.5 A (380 / 400 V) 55 °C 8.5 A (440 V) 55 °C 7.4 A (500 V) 55 °C 6.8 A (690 V) 55 °C 3.8 A

Rated Operational Voltage:	Auxiliary Circuit 12 ... 240 V DC Auxiliary Circuit 12 ... 500 V AC Main Circuit 690 V AC
Conventional Free-air Thermal Current (I_{th}):	Main Circuit 12 A
Rated Control Circuit Voltage (U_c):	380 ... 415 V AC
Coil Operating Limits:	(acc. to IEC 60947-4-1) for AC supply $0.85 \dots 1.1 \times U_c$ (at $\theta \leq 55 \text{ }^{\circ}\text{C}$) (acc. to IEC 60947-4-1) for DC supply $0.85 \dots 1.1 \times U_c$ (at $\theta \leq 55 \text{ }^{\circ}\text{C}$)
Degree of Protection:	Auxiliary Circuit Terminals IP20 Control Circuit Terminals IP20 Main Circuit Terminals IP20
Mechanical Durability:	10000000 cycle
Mounting on DIN Rail:	TH35-7.5 (35 x 7.5 mm Mounting Rail) acc. to IEC 60715 TH35-15 (35 x 15 mm Mounting Rail) acc. to IEC 60715
Power Loss:	at Rated Operating Conditions per Pole 2 W
Standards:	IEC/EN 60947-1 IEC/EN 60947-4-1 IEC/EN 60947-5-1 UL 60947-1 UL 60947-4-1

Technical UL/CSA

Maximum Operating Voltage UL/CSA:	Main Circuit 600 V AC
Horsepower Rating UL/CSA:	(208 V AC) Three Phase 1 Hp (220 ... 240 V AC) Single Phase 0.5 Hp (220 ... 240 V AC) Three Phase 2 Hp (440 ... 480 V AC) Three Phase 3 Hp (550 ... 600 V AC) Three Phase 1 Hp
General Use Rating UL/CSA:	(300 V AC) 8 A

Certificates and Declarations (Document Number)

CB Certificate:	1SAA938000-2002
CCC Certificate:	1SAA938001-3804
cUL Certificate:	1SAA938003-1701
Declaration of Conformity - CE:	1SAD938509-0001
EAC Certificate:	1SAA920000-2702
RMRS Certificate:	1SAA938000-0703
RoHS Information:	1SAA938001-4402
UL Certificate:	1SAA938000-1604

Classifications

Object Classification Code:	Q
eClass:	7.0 27371009

ETIM 4:	EC000066 - Magnet contactor, AC-switching
ETIM 5:	EC000010 - Starter combination