

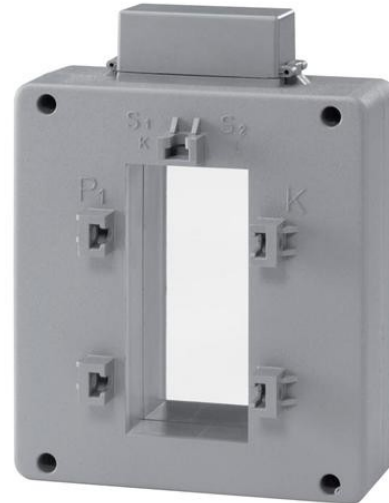


Electric Automation
Automation specialists

Reference: CT12/2500
Code: 2CSG721240R1101

CT12/2500 Current transformer

Buy it at [Electric Automation Network](#)



CT12/2500 is used to transform primary currents to $\approx 5A$ secondary currents for c.a. measurement instruments

Ordering

EAN:	8012542608400
Minimum Order Quantity:	1 piece
Customs Tariff Number:	85043121

Dimensions

Product Net Width:	0.195 m
Product Net Height:	0.100 m
Product Net Depth:	0.200 m
Product Net Weight:	1.900 kg

Container Information

Package Level 1 Units:	1 piece
Package Level 1 Width:	0.196 m
Package Level 1 Height:	0.069 m
Package Level 1 Length:	0.18 m
Package Level 1 Gross Weight:	2 kg

Package Level 1 EAN:	8012542608400
Package Level 2 Units:	1 piece
Package Level 2 Gross Weight:	0.700 kg

Technical

Mounting Type:	Through primary
Cable Use:	Cable and Horizontal bar
Cable Cross-Section:	2 x 50 mm
Rated Cross-Section:	125 x 50 mm
Rated Primary Current (I_{pn}):	2500 A

Environmental

RoHS Status:	Following EU Directive 2002/95/EC August 18, 2005 and amendment
--------------	---

Certificates and Declarations (Document Number)

Declaration of Conformity - CE:	ITSCE115CT
RoHS Information:	2CSC445004K0201

Classifications

Object Classification Code:	T
ETIM 4:	EC002048 - Current transformer
ETIM 5:	EC002048 - Current transformer