

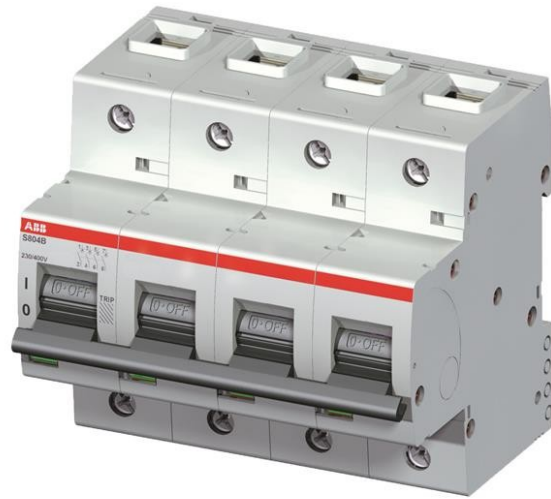


Electric Automation
Automation specialists

Reference: S804B-D63
Code: 2CCS814001R0631

S804B-D63 High Performance Circuit Breaker

[Buy it at Electric Automation Network](#)



The S804B-D63 is a 4-pole High Performance Circuit breaker with D-Characteristic, with cage terminal and a rated current of 63 A. It is a current limiting device with a maximum breaking capacity of 16kA at 230/400V. It can be used for voltages up to 230/400V. It has two different tripping mechanisms, the thermal tripping mechanism for overload protection and the electromechanic tripping mechanism for short circuit protection. The S804B-D63 complies with IEC/EN 60947-2 and EN 60898-1 and allows the use for residential, commercial and industrial applications. It has numerous of approvals, therefore it can be used worldwide. The extensive range of accessory makes the use of S804B-D63 more comfortable. Due to the fast arc extinction of S804B-D63 your application will be secured.

Ordering

| | |
|-------------------------|---------------|
| EAN: | 7612271416096 |
| Minimum Order Quantity: | 1 piece |
| Customs Tariff Number: | 85362020 |

Dimensions

| | |
|---------------------|---------|
| Product Net Width: | 106 mm |
| Product Net Depth: | 82.5 mm |
| Product Net Height: | 95 mm |
| Product Net Weight: | 0.98 kg |

Container Information

| | |
|-------------------------------|---------------|
| Package Level 1 Units: | 1 piece |
| Package Level 1 Width: | 105 mm |
| Package Level 1 Length: | 111 mm |
| Package Level 1 Height: | 99 mm |
| Package Level 1 Gross Weight: | 1.01 kg |
| Package Level 1 EAN: | 7612271416096 |
| Package Level 2 Units: | 1 piece |
| Package Level 2 Height: | 0.92 mm |
| Package Level 2 Gross Weight: | 1.1 kg |

Environmental

| | |
|--------------------------|---|
| Ambient Air Temperature: | Operation -25 ... +60 °C Storage -40 ... +70 °C |
| RoHS Status: | Following EU Directive 2002/95/EC August 18, 2005 and amendment |

Technical

| | |
|--|--|
| Standards: | IEC/EN 60947-2 IEC/EN 60898-1 |
| Number of Poles: | 4 |
| Tripping Characteristic: | D |
| Rated Current (I_n): | 63 A |
| Rated Operational Voltage: | 230/400 V AC 75 V DC |
| Power Loss: | at Rated Operating Conditions per Pole 6.4 W |
| Rated Insulation Voltage (U_i): | 440 V AC |
| Rated Frequency (f): | 50 / 60 Hz |
| Rated Short-Circuit Capacity (I_{cn}): | 10 kA |
| Rated Ultimate Short-Circuit Breaking Capacity (I_{cu}): | (230 / 400 V AC) 16 kA |
| Rated Service Short-Circuit Breaking Capacity (I_{cs}): | (230 / 400 V AC) 10 kA |
| Oversvoltage Category: | III |
| Pollution Degree: | 3 |
| Rated Impulse Withstand Voltage (U_{imp}): | 4 kV |
| Housing Material: | Insulation group I, RAL 7035 |
| Contact Position Indication: | ON / OFF / TRIP |
| Degree of Protection: | acc. to IEC 60529 IP20 |
| Remarks: | Connection from top and bottom Connecting with CU only IP40 in enclosure with cover Cage terminal with captIIIe screw |
| Terminal Type: | Screw Terminals |

| | |
|---------------------------|--|
| Connecting Capacity: | Flexible 1 ... 50 mm ² Flexible Stranded 1 ...70 mm ² |
| Tightening Torque: | 3.5 N·m |
| Recommended Screw Driver: | Pozidriv 2 |
| Mounting on DIN Rail: | TH35-15 (35 x 15 mm Mounting Rail) acc. to IEC 60715 TH35-7.5 (35 x 7.5 mm Mounting Rail) acc. to IEC 60715 |
| Mounting Position: | Any |

Certificates and Declarations (Document Number)

| | |
|---------------------------------|-----------------|
| Declaration of Conformity - CE: | 2CCC413016D060 |
| RoHS Information: | 2CCC413008D0204 |

Classifications

| | |
|-----------------------------|--|
| ETIM 4: | EC000042 - Miniature circuit breaker (MCB) |
| ETIM 5: | EC000042 - Miniature circuit breaker (MCB) |
| Object Classification Code: | F |