

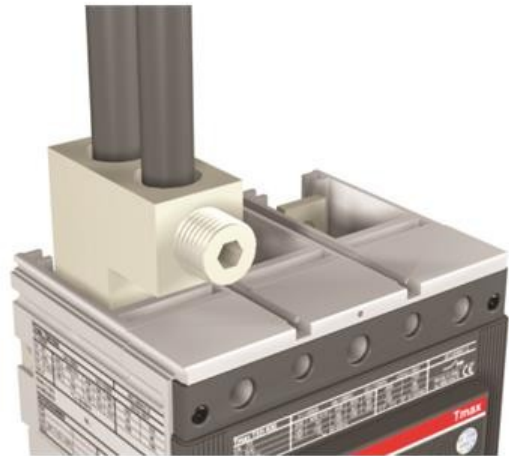


**Electric Automation**  
Automation specialists

Reference: T6  
Code: 1SDA060689R1

KIT FC CuAl 4x150mm<sup>2</sup> T6 1000 6pcs

Buy it at Electric Automation Network



FRONT TERMINALS FOR CABLES IN COPPER-ALUMINIUM 4x150mm<sup>2</sup> 6pcs T6 1000

### Ordering

EAN:	8015644632120
Minimum Order Quantity:	1 piece
Customs Tariff Number:	85389099

### Dimensions

Product Net Weight:	2.45 kg
---------------------	---------

### Container Information

Package Level 1 Units:	1 piece
Package Level 1 Gross Weight:	2.45 kg
Package Level 1 EAN:	8015644632120

### Additional Information

Product Main Type:	Accessories for Tmax T
Product Name:	Accessory for Circuit Breakers
Product Type:	ACC

Standards:	IEC
Suitable For:	T6
Suitable for Product Class:	SACE Tmax T

### Certificates and Declarations (Document Number)

Data Sheet, Technical Information:	1SDC210015D0201
Declaration of Conformity - CE:	1SDL000165R0001

### Classifications

Object Classification Code:	Q
UNSPSC:	39121100