

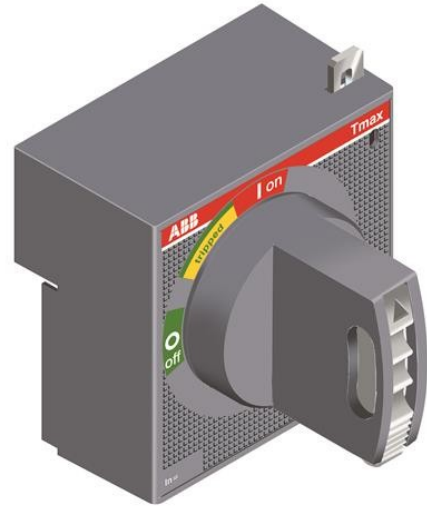


**Electric Automation**  
Automation specialists

Reference: T4-T5  
Code: 1SDA054930R1

RHE\_EM T4-T5 F/P EMER. RETURNED

Buy it at Electric Automation Network



ROTARY HANDLE OPERATING MECHANISM EMERGENCY ADJUSTABLE DEPTH L=500 MM WITH PADLOCK DEVICE AND DOOR INTERLOCK FOR C.BREAKER FIXED-PLUG-IN T4-T5

### Ordering

EAN:	8015644560522
Minimum Order Quantity:	1 piece
Customs Tariff Number:	85389099

### Dimensions

Product Net Weight:	0.6 kg
---------------------	--------

### Container Information

Package Level 1 Units:	1 piece
Package Level 1 Gross Weight:	0.8 kg
Package Level 1 EAN:	8015644560522

### Environmental

RoHS Status:	Planned to follow EU Directive 2002/95/EC August 18, 2005 and amendment after 2006-07-01
--------------	--

## Additional Information

Product Main Type:	Accessories for Tmax T
Product Name:	Accessory for Circuit Breakers
Product Type:	ACC
Standards:	IEC
Suitable For:	T4 T5
Suitable for Product Class:	SACE Tmax T

## Certificates and Declarations (Document Number)

Data Sheet, Technical Information:	1SDC210015D0201
Declaration of Conformity - CE:	1SDL000165R0001
RoHS Information:	1SDL000200R0001

## Classifications

Object Classification Code:	Q
UNSPSC:	39120000