



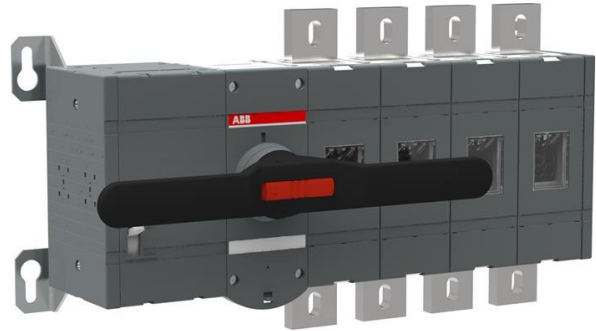
**Electric Automation**  
Automation specialists

Reference: OTM1250E4M230C

Code: 1SCA115367R1001

OTM1250E4M230C Motorized switch-disconnector

Buy it at Electric Automation Network



Including a handle for manual operation, bolt kit with nut and washers for all terminals (100A...1250A), male connectors for control circuit and a handle and spare fuse storage clip.

## Ordering

EAN:	6417019477374
Minimum Order Quantity:	1 piece
Customs Tariff Number:	85365080

## Dimensions

Product Net Width:	587 mm
Product Net Height:	306 mm
Product Net Depth:	202 mm
Product Net Weight:	29 kg

## Container Information

Package Level 1 Units:	1 piece
Package Level 1 Width:	580 mm
Package Level 1 Height:	200 mm
Package Level 1 Length:	780 mm
Package Level 1 Gross Weight:	29 kg
Package Level 1 EAN:	6417019477374

## Environmental

RoHS Status:	Planned to follow EU Directive 2002/95/EC August 18, 2005 and amendment after 2007 Q1
--------------	---

## Additional Information

Conventional Free-air Thermal Current ( $I_{th}$ ):	q = 40 °C 1250 A
IIT Publishing Status:	Level 0 - Information enabled
Number of Poles:	4
Operating Mechanism:	Mechanism at the end of the switch
Pollution Degree:	3
Position of Line Terminals:	Top In - Bottom Out
Power Loss:	at Rated Operating Conditions per Pole 29 W
Product Main Type:	OTM1250
Product Name:	Motorized switch-disconnector
Rated Impulse Withstand Voltage ( $U_{imp}$ ):	12 kV
Rated Insulation Voltage ( $U_i$ ):	1000 V
Rated Operational Current AC-21A ( $I_e$ ):	(380 ... 415 V) 1250 A (500 V) 1250 A (690 V) 1250 A
Rated Operational Current AC-22A ( $I_e$ ):	(380 ... 415 V) 1250 A (500 V) 1250 A (690 V) 1250 A
Rated Operational Current AC-23A ( $I_e$ ):	(380 ... 415 V) 1250 A (500 V) 1250 A (690 V) 1250 A
Rated Operational Power AC-23A ( $P_e$ ):	(400 V) 710 kW (415 V) 710 kW (500 V) 900 kW (690 V) 1200 kW
Rated Operational Voltage:	1000 V
Rated Short-time Withstand Current ( $I_{cw}$ ):	for 1 s 50 kiloampere rms

## Certificates and Declarations (Document Number)

Data Sheet, Technical Information:	1SCC301020C0201
RoHS Information:	1SCC303036D0202

## Classifications

ETIM 5:	EC000216 - Switch disconnector
Object Classification Code:	Q