

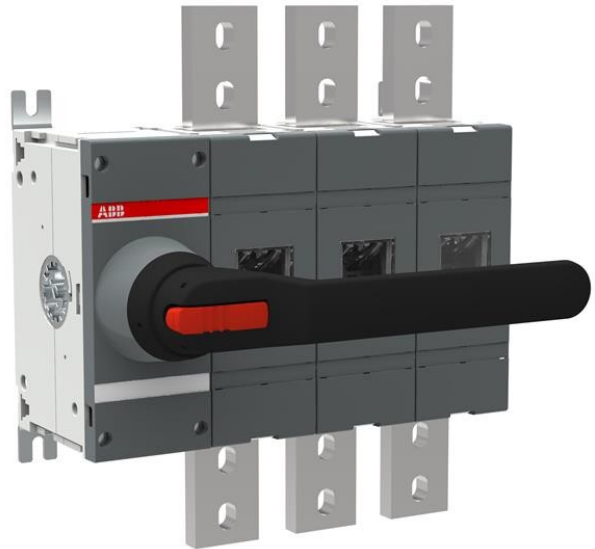


Electric Automation
Automation specialists

Reference: OT1600E03K
Code: 1SCA108352R1001

OT1600E03K switch-disconnector

Buy it at Electric Automation Network



Including a black Test-OFF-ON plastic handle and shaft as standard. The handle is padlockable in the OFF-position.

Ordering

EAN:	6417019416748
Minimum Order Quantity:	1 piece
Customs Tariff Number:	85365080

Dimensions

Product Net Width:	335 mm
Product Net Height:	372 mm
Product Net Depth:	127 mm
Product Net Weight:	18.5 kg

Container Information

Package Level 1 Units:	1 piece
Package Level 1 Width:	400 mm
Package Level 1 Height:	300 mm
Package Level 1 Length:	630 mm
Package Level 1 Gross Weight:	18.6 kg

Package Level 1 EAN:	6417019416748
----------------------	---------------

Environmental

RoHS Status:	Planned to follow EU Directive 2002/95/EC August 18, 2005 and amendment after 2009 Q4
--------------	---

Additional Information

Conventional Free-air Thermal Current (I_{th}):	q = 40 °C 1600 A
Conventional Thermal Current (I_{the}):	Fully Enclosed 1600 A
Earthing Switch Type:	No Additional Type
Handle Type:	Direct
IIT Publishing Status:	Level 0 - Information enabled
Includes:	Handle and Shaft
Mounting Type:	Normal
Number of Poles:	3
Operating Mechanism:	Mechanism at the end of the switch
Operating Mode:	Front Operated
Order Multiple:	1 piece
Pollution Degree:	3
Power Loss:	48 W
Product Main Type:	OT1600
Product Name:	Switch-disconnector
Rated Impulse Withstand Voltage (U_{imp}):	12 kV
Rated Insulation Voltage (U_i):	1000 V
Rated Operational Current AC-21A (I_e):	(690 V) 1600 A (1000 V AC) 1600 A
Rated Operational Current AC-22A (I_e):	(500 V) 1600 A (690 V) 1600 A
Rated Operational Current AC-23A (I_e):	(500 V) 1250 A (690 V) 1250 A
Rated Operational Power AC-23A (P_e):	(400 V) 710 kW (415 V) 710 kW (500 V) 900 kW (690 V) 1200 kW
Rated Operational Voltage:	1000 V
Rated Short-time Withstand Current (I_{cw}):	for 1 s 50 kiloampere rms
Special Functions:	No
Standards:	IEC
Terminal Type:	Lug terminals

Certificates and Declarations (Document Number)

Data Sheet, Technical Information:	1SCC301020C0201
Declaration of Conformity - CE:	1SCC301157D0202

Classifications

ETIM 5:	EC000216 - Switch disconnecter
Object Classification Code:	Q