

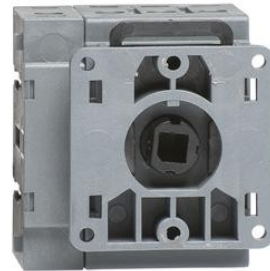


**Electric Automation**  
Automation specialists

Reference: OT16FT4N2  
Code: 1SCA105711R1001

OT16FT4N2 switch-disconnector

Buy it at Electric Automation Network



Front operated switch-disconnector. Types OT 16...125 include protected terminal clamps, IP 20.

### Ordering

EAN:	6417019389950
Minimum Order Quantity:	10 piece
Customs Tariff Number:	85365080

### Dimensions

Product Net Width:	49 mm
Product Net Height:	54 mm
Product Net Depth:	52 mm
Product Net Weight:	0.16 kg

### Container Information

Package Level 1 Units:	1 piece
Package Level 1 Width:	67 mm
Package Level 1 Height:	61 mm
Package Level 1 Length:	79 mm
Package Level 1 Gross Weight:	0.16 kg

Package Level 1 EAN:	6417019389950
----------------------	---------------

## Environmental

RoHS Status:	Planned to follow EU Directive 2002/95/EC August 18, 2005 and amendment after 2009 Q3
--------------	---

## Technical UL/CSA

Ampere Rating UL/CSA:	16 A
Horsepower Rating UL/CSA:	(acc. to UL 200 V) 3 Hp (acc. to UL 208 V) 3 Hp (acc. to UL 240 V) 5 Hp (acc. to UL 480 V) 10 Hp (acc. to UL 600 V) 10 Hp

## Additional Information

Cable Cross-Section:	0.75...10 mm <sup>2</sup>
Conventional Free-air Thermal Current (I <sub>th</sub> ):	q = 40 °C 25 A
Conventional Thermal Current (I <sub>the</sub> ):	Fully Enclosed 25 A
Earthing Switch Type:	No Additional Type
Handle Type:	None
IIT Publishing Status:	Level 0 - Information enabled
Includes:	None
Mounting Type:	Door Mounting
Number of Poles:	4
Operating Mechanism:	Mechanism on top of the switch
Operating Mode:	Front Operated
Order Multiple:	10 piece
Pollution Degree:	3
Position of Line Terminals:	Top In - Bottom Out
Power Loss:	at Rated Operating Conditions per Pole 0.3 W
Product Main Type:	OT16
Product Name:	Switch-disconnector
Rated Impulse Withstand Voltage (U <sub>imp</sub> ):	8 kV
Rated Insulation Voltage (U <sub>i</sub> ):	750 V
Rated Operational Current AC-21A (I <sub>e</sub> ):	(380 ... 415 V) 16 A (500 V) 16 A (690 V) 10 A
Rated Operational Current AC-22A (I <sub>e</sub> ):	(380 ... 415 V) 16 A (500 V) 16 A (690 V) 16 A

Rated Operational Current AC-23A ( $I_e$ ):	(500 V) 16 A (690 V) 16 A (380 ... 415 V) 16 A
Rated Operational Power AC-23A ( $P_e$ ):	(220 ... 240 V) 3 kW (400 V) 7.5 kW (415 V) 7.5 kW (500 V) 7.5 kW (690 V) 7.5 kW
Rated Operational Voltage:	750 V
Rated Short-time Withstand Current ( $I_{cw}$ ):	for 1 s 0.5 kiloampere rms
Special Functions:	No
Standards:	IEC
Terminal Type:	Screw Terminals

### Certificates and Declarations (Document Number)

Data Sheet, Technical Information:	1SCC301020C0201
Declaration of Conformity - CE:	1SCC301166D0201
RoHS Information:	1SCC301183D0201

### Classifications

ETIM 5:	EC000216 - Switch disconnecter
Object Classification Code:	Q